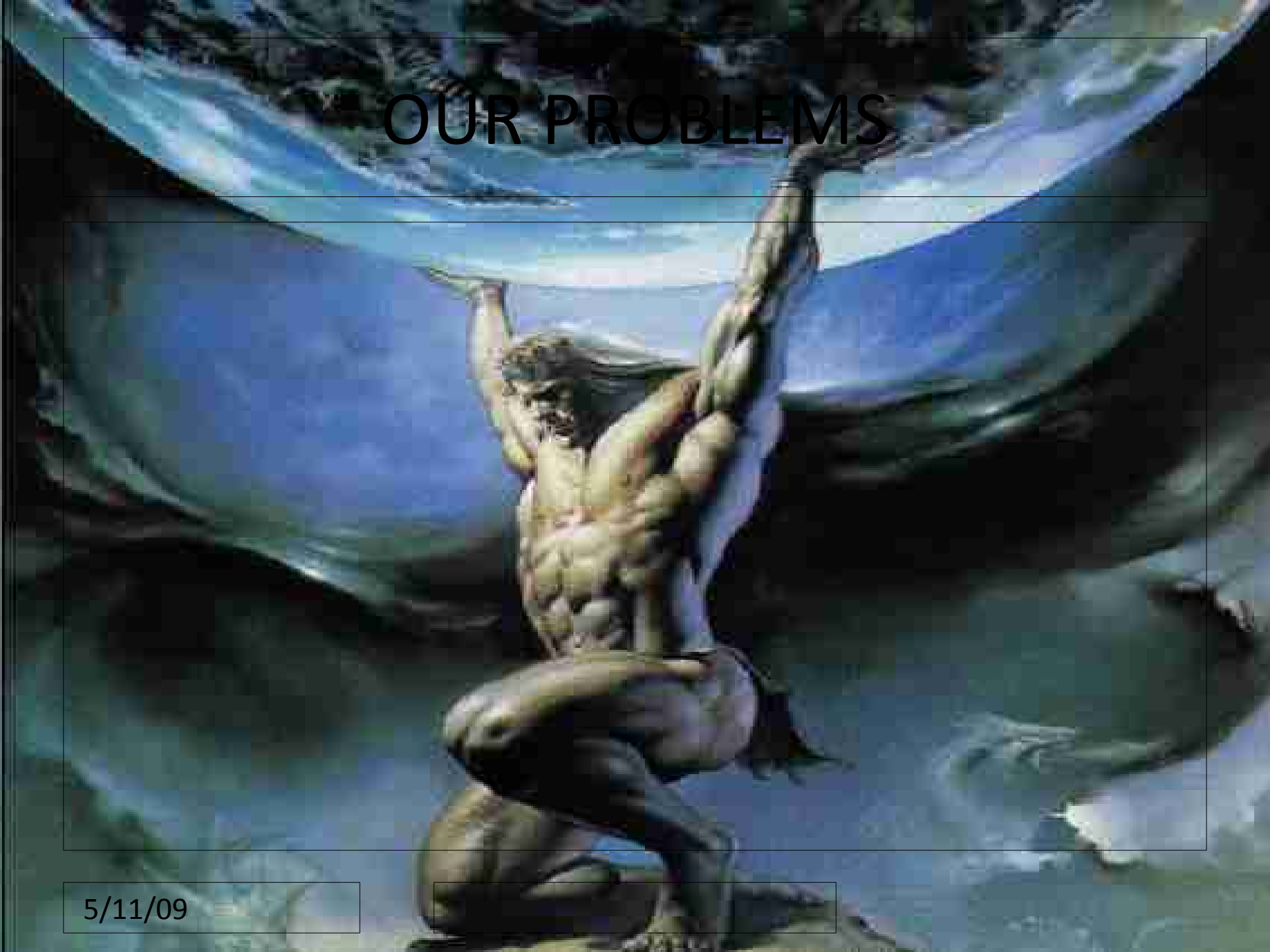
A group of diverse people, including men and women of various ethnicities, are laughing and smiling together. They are wearing winter clothing like jackets and sweaters. The background is a bright, slightly overcast sky. The overall mood is joyful and inclusive.

We All Laugh in the Same Language

Click to edit Master subtitle style

OUR PROBLEMS

5/11/09



Narrow Range of Consciousness



Self Centered Outlook

ME

5/11/09

Negative Thought Patterns

Teen Suicide



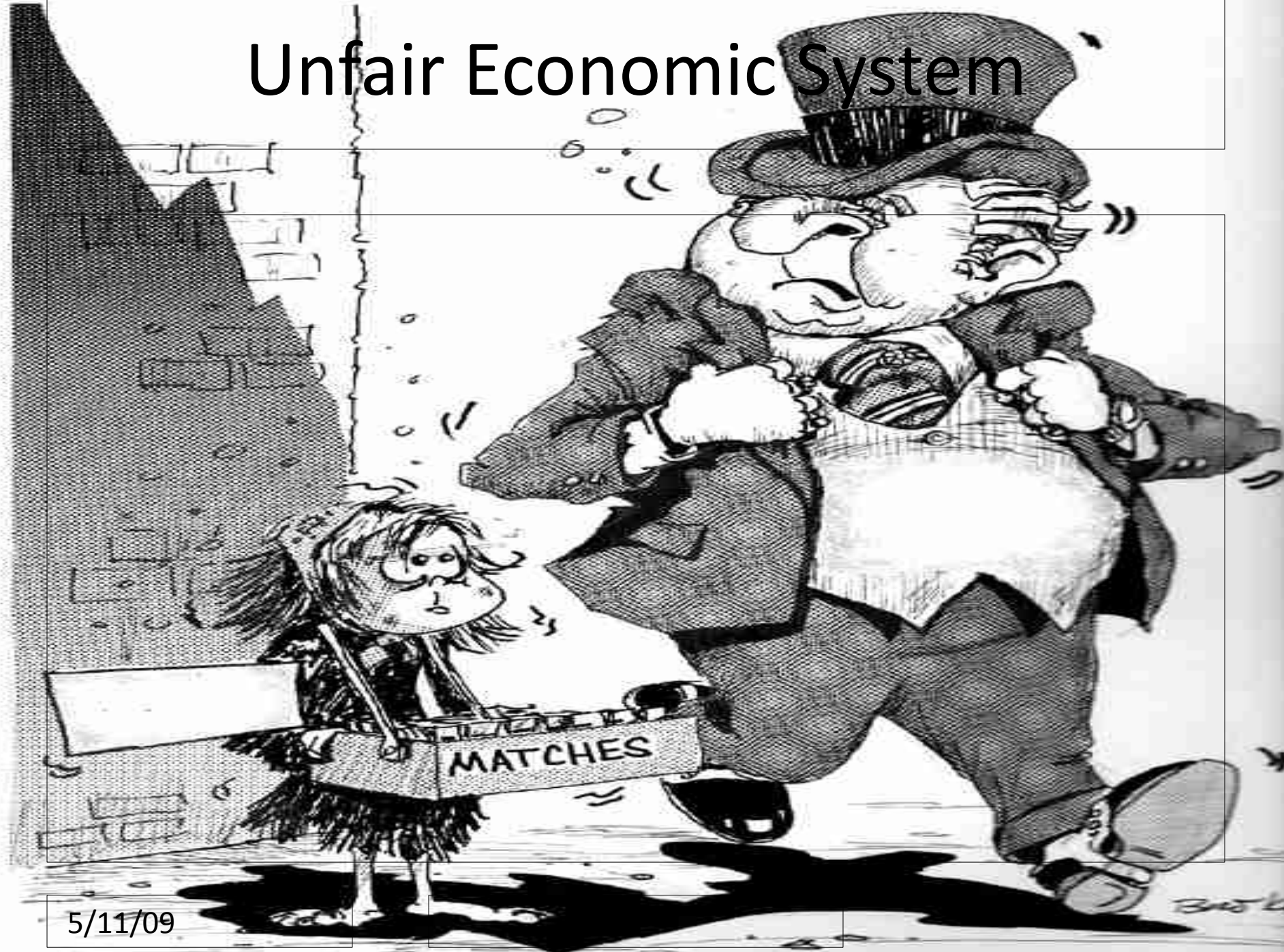
5/11/09

The Outer World is the Expression of Inner Thought



5/11/09

Unfair Economic System



5/11/09

Environmental Destruction

A photograph showing the aftermath of a forest fire. The scene is dominated by charred, blackened tree trunks and branches. The ground is covered in a layer of reddish-brown soil, likely ash or charred earth, with many fallen, skeletal branches scattered across it. The sky is a clear, pale blue. The overall atmosphere is one of desolation and environmental destruction.

5/11/09

Static Peace Enforced by Arms



5/11/09

“As a carry over from our animal past, we have a territorial instinct, and tribal instinct. We are an emotionally , spiritually and morally undeveloped species with a highly developed intellect and resulting technology.”

Conrad Lorenz



What is the Way Out of This Mess?



5/11/09

A New Paradigm of Human Potential

A lush green forest with sunlight filtering through the trees and a field of white flowers in the foreground. The scene is vibrant and serene, with tall trees and a dense canopy of leaves. Sunbeams are visible, creating a magical atmosphere. The foreground is filled with a field of small white flowers, possibly clover, interspersed with green grass.

5/11/09

Moving From Group Psychology to Service Psychology



5/11/09

Channelizing Thought Waves to Higher Consciousness



5/11/09

Paradigm Shift

- Health Revolution
- Social Justice Movements
- Green Movement
- 3rd bottom line in business
- Spiritual Renaissance

Neohumanism: The Practice of Love for All Created Beings



5/11/09



"The devotional sentiment is the highest and most valuable treasure of humanity."

- Shrii Shrii Anandamurti

What is the “Neo” in
Neohumanism?



5/11/09

A 360° Outlook



5/11/09

Neo-Humanism

Atma Sukha Tattva - Principle of
Selfish Pleasure

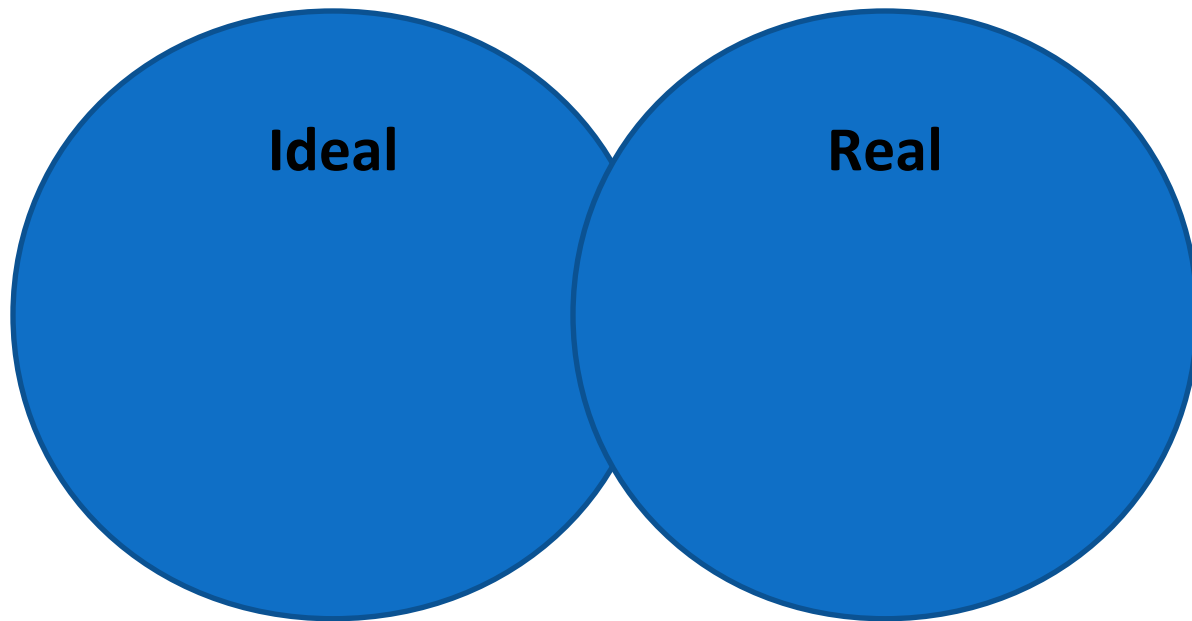
Sama Samaj Tattva - Principle of
Social Equality

Starts from Within



5/11/09

Happy Convergence of Ideal and Real



Perennial Source of Inspiration



5/11/09

Humans and Earth Growing Together



5/11/09

New Appreciation of Our Earthly Role As:

- Stewards



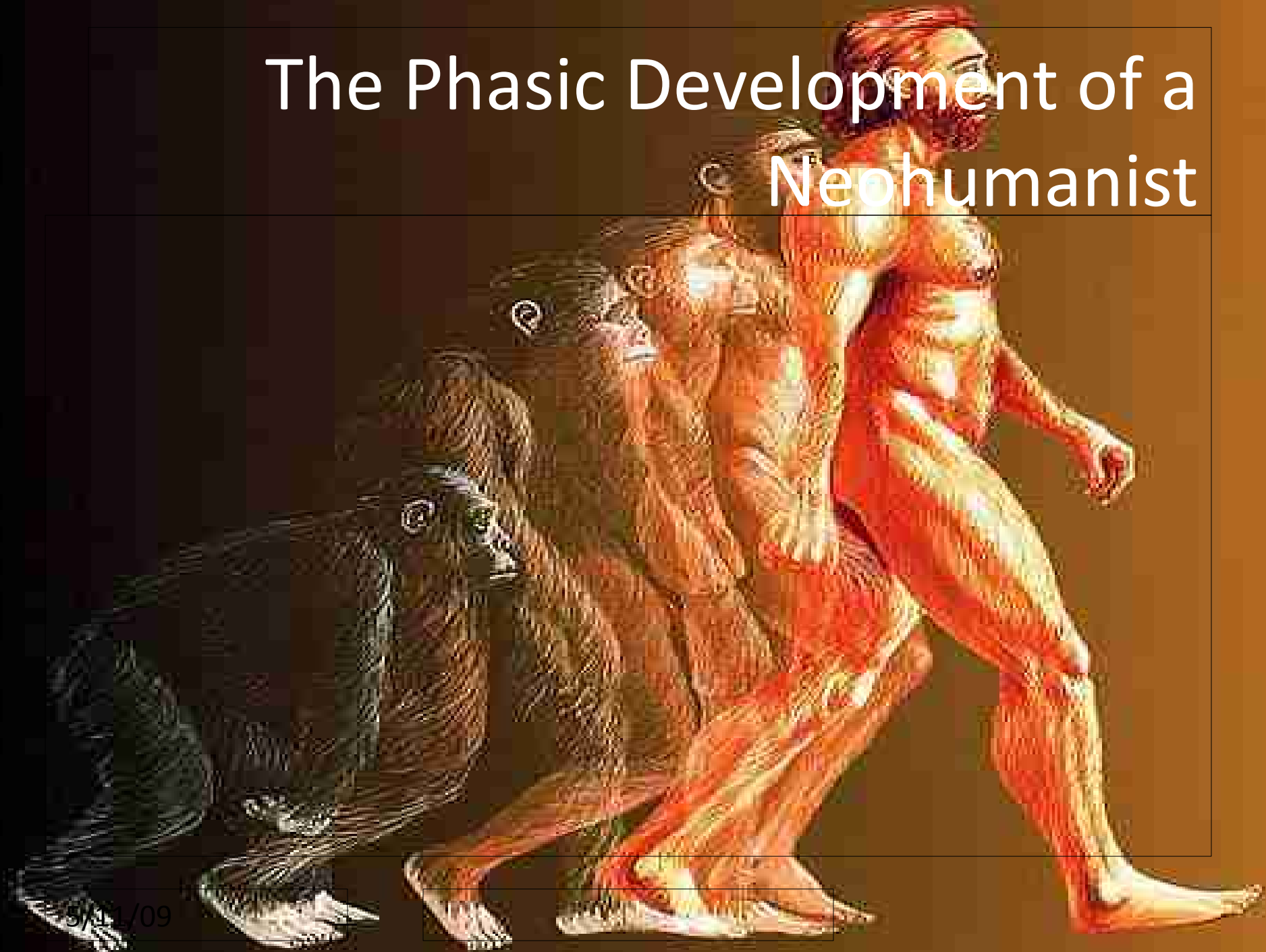
- Servants



Co-habitants



The Phasic Development of a Neohumanist



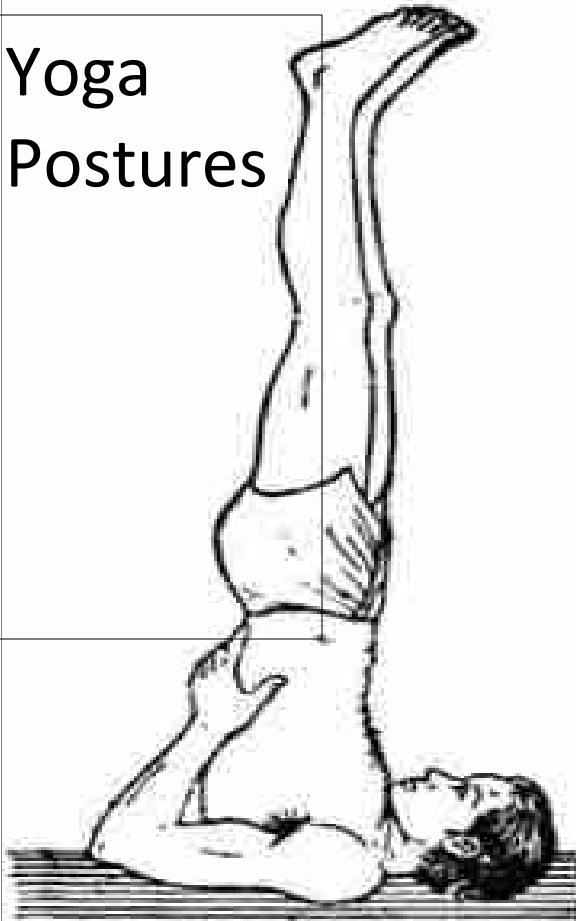
Neohumanism as a Practice



Meditation

Yoga
Postures

Vegetarian
Diet

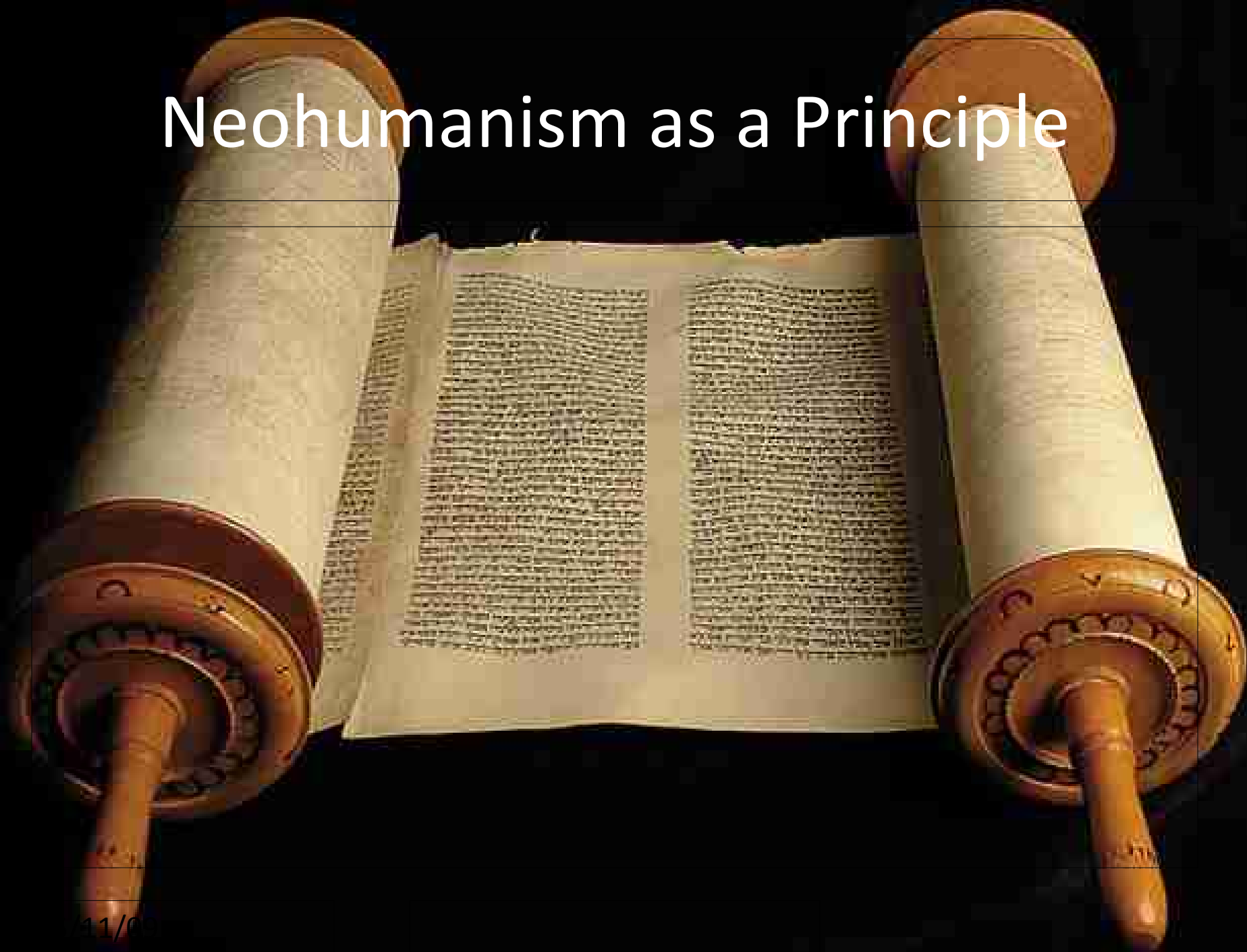


Ethical Behaviour

How is Meditation related to Neo-Humanism?

- Ananda Marga meditation system
- First lesson - identify self as Brahma
- Second lesson - identify everything outside the self as Brahma

Neohumanism as a Principle



Neohumanism as a Mission



5/11/09

Sow an idea, reap an action
Sow an action, reap a practice
Sow a practice, reap a habit
Sow a habit, reap a personality
Sow a personality, reap a destiny

A Work in Progress



A Case Study in Thailand

- Sustainable Habitats & Smart Houses
- Hydroponic farming & Organic Farming
- Bio Digesters using Algae
- Vanadium Regenerative Fuel Cell & Its Multiple Applications
- Energy Efficient Homes using Dry Technologies
- Neohumanist life style training & progressive education

ECO-VILLAGE



Organic Farming/Hydroponics

FOOD



ENERGY EFFICIENT HOMES

HABITAT



SOLAR ENERGY



VANADIUM FUEL CELL STORAGE



GENERATOR



FOOD WASTE



ALGAE



BIOGAS



BIO-ENERGY



MANURE



WATER



Organic Farms



5/11/09

Eco Communities



5/11/09

Animal Sanctuaries



5/11/09

Protecting Forest Communities

A photograph of a dense bamboo forest. The bamboo stalks are tall and green, with some showing signs of being cut or damaged. The ground is covered in fallen bamboo leaves and other forest debris. On the right side, a portion of a traditional thatched-roof structure is visible, suggesting a rural or indigenous settlement. The overall scene is lush and green, with sunlight filtering through the canopy.

5/11/09

Replanting the Earth



5/11/09

Neo-Humanist Education

Africa, India, Asia, Latin America - more than 1000 schools



5/11/09

Act Locally, Think Globally



"Never think that a small group of highly dedicated people cannot change the world. In fact, it is the only thing that ever has."

Anthropologist Margaret Mead



5/11/09